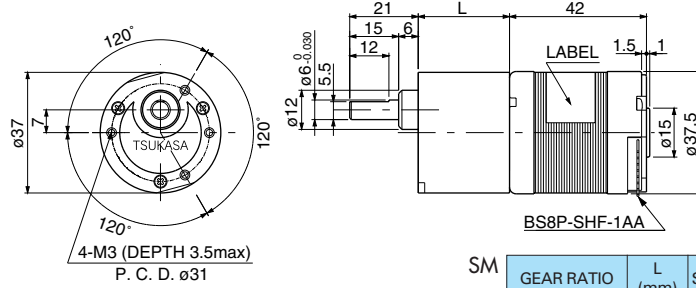


# TG-55

(1.6~8.6W) BRUSHLESS MOTOR,  
LONG LIFE, INNER ROTOR.

## SM

TG-55A  
TG-55B  
TG-55C



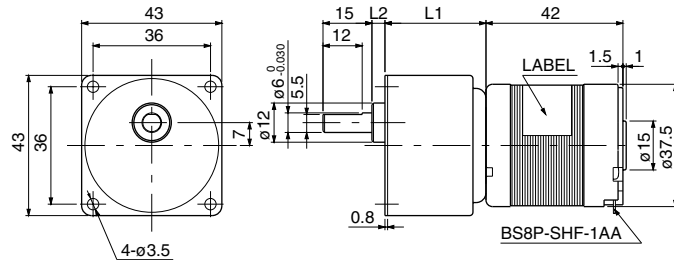
GEAR RATIO	L (mm)	STAGE	TORQUE (kg-cm)	WEIGHT (g)
1/5~1/10	23	2	1	100
1/12.5~1/30	25.5	3	2	105
1/36~1/100	28	4	3	110
1/120~1/300	30.5	5	6	115
1/360~1/1000	33	6	6	120

Allowable torque-speed characteristics

MODEL	GEAR RATIO	1	1	1	1	1	1	1	1	1	1	1	1	1	1	1	1	1		
		5	10	15	18	25	30	36	50	60	75	100	120	150	200	250	300	500	750	1000
TG-55A-SM (12V)	SPEED(r/min)	305	153	105	84.7	61.1	52.3	44.7	31.4	27.6	23.3	18.4	13.4	11.4	9	7.5	6.4	3.9	2.7	2
	TORQUE(mN-m)	39.2	78.4	98	127.4	176.4	196	196	294	294	294	294	588	588	588	588	588	588	588	588
	TORQUE(kg-cm)	0.4	0.8	1	1.3	1.8	2	2	3	3	3	3	6	6	6	6	6	6	6	6
TG-55B-SM (12V)	SPEED(r/min)	473	253	158	133	105	91.8	69.7	55.1	47.6	39.5	30.7	23.3	19.4	15.2	12.4	10.5	6.5	4.4	3.3
	TORQUE(mN-m)	58.8	98	156.8	186.2	196	196	294	294	294	294	294	588	588	588	588	588	588	588	588
	TORQUE(kg-cm)	0.6	1	1.6	1.9	2	2	3	3	3	3	3	6	6	6	6	6	6	6	6
TG-55C-SM (12V)	SPEED(r/min)	708	354	240	196	142	120	101	71.9	61.9	51.1	39.5	30.4	25.2	19.6	16	13.5	8.3	5.6	4.2
	TORQUE(mN-m)	39.2	78.4	98	127.4	176.4	196	196	294	294	294	294	294	588	588	588	588	588	588	588
	TORQUE(kg-cm)	0.4	0.8	1	1.3	1.8	2	2	3	3	3	3	6	6	6	6	6	6	6	6
TG-55A-SM (24V)	SPEED(r/min)	591	339	203	179	139	119	93.6	71.6	61.1	50.1	38.5	30.2	24.8	19.1	15.5	13.1	8	5.4	4
	TORQUE(mN-m)	78.4	98	196	196	196	196	294	294	294	294	294	588	588	588	588	588	588	588	588
	TORQUE(kg-cm)	0.8	1	2	2	2	2	3	3	3	3	3	6	6	6	6	6	6	6	6
TG-55B-SM (24V)	SPEED(r/min)	1120	581	374	313	237	203	161	122	104	84.6	64.7	51.2	41.9	32.1	26.1	21.9	13.3	9	6.8
	TORQUE(mN-m)	58.8	98	156.8	186.2	196	196	294	294	294	294	294	588	588	588	588	588	588	588	588
	TORQUE(kg-cm)	0.6	1	1.6	1.9	2	2	3	3	3	3	3	6	6	6	6	6	6	6	6
TG-55C-SM (24V)	SPEED(r/min)	1541	770	518	428	308	259	218	155	132	107	82	65.3	53.3	40.8	33	27.7	16.8	11.3	8.5
	TORQUE(mN-m)	39.2	78.4	98	127.4	176.4	196	196	294	294	294	294	588	588	588	588	588	588	588	588
	TORQUE(kg-cm)	0.4	0.8	1	1.3	1.8	2	2	3	3	3	3	6	6	6	6	6	6	6	6

## AM

TG-55A  
TG-55B  
TG-55C



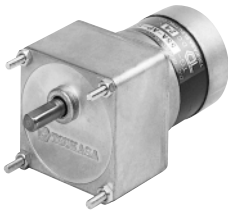
GEAR RATIO	L1 (mm)	L2 (mm)	STAGE	TORQUE (kg-cm)	WEIGHT (g)
1/5~1/10	26	4	2	1	110
1/12.5~1/18	26	6.5	3	3.5	115
1/25~1/36	26	6.5	3	4	115
1/50~1/75	31	4	4	5	115
1/90~1/150	31	4	4	7	115
1/180~1/500	31	6.5	5	7	120

Allowable torque-speed characteristics

MODEL	GEAR RATIO	1	1	1	1	1	1	1	1	1	1	1	1	1	1	1	1	1	1	1
		5	10	15	18	25	30	36	50	60	75	100	120	150	200	250	300	500	750	1000
TG-55A-AM (12V)	SPEED(r/min)	305	153	105	84.7	61.1	52.3	43	31.4	26.4	20.9	15.2	13.2	11.3	8.8	7.3	6.2	3.9	2.7	2
	TORQUE(mN-m)	39.2	78.4	98	127.4	176.4	196	245	294	343	441	637	686	686	686	686	686	686	686	686
	TORQUE(kg-cm)	0.4	0.8	1	1.3	1.8	2	2.5	3	3.5	4.5	6.5	7	7	7	7	7	7	7	7
TG-55B-AM (12V)	SPEED(r/min)	473	253	158	133	97.6	81.3	68.5	48.8	41.8	35.8	26.5	23.1	19.3	14.9	12.2	10.4	6.4	4.4	3.3
	TORQUE(mN-m)	58.8	98	156.8	186.2	245	294	343	441	490	490	686	686	686	686	686	686	686	686	686
	TORQUE(kg-cm)	0.6	1	1.6	1.9	2.5	3	3.5	4.5	5	5	7	7	7	7	7	7	7	7	7
TG-55C-AM (12V)	SPEED(r/min)	708	354	240	196	142	120	99	71.9	60.2	47.9	35.4	30.1	25	19.2	15.8	13.3	8.3	5.6	4.2
	TORQUE(mN-m)	39.2	78.4	98	127.4	176.4	196	245	294	343	441	637	686	686	686	686	686	686	686	686
	TORQUE(kg-cm)	0.4	0.8	1	1.3	1.8	2	2.5	3	3.5	4.5	6.5	7	7	7	7	7	7	7	7
TG-55A-AM (24V)	SPEED(r/min)	591	339	203	166	119	101	89.4	64.4	56.2	46.9	34.9	29.9	24.7	18.8	15.3	12.9	8	5.4	4
	TORQUE(mN-m)	78.4	98	196	245	343	392	392	490	490	490	686	686	686	686	686	686	686	686	686
	TORQUE(kg-cm)	0.8	1	2	2.5	3.5	4	4	5	5	5	7	7	7	7	7	7	7	7	7
TG-55B-AM (24V)	SPEED(r/min)	1120	581	374	313	228	190	159	114	96.4	80	59.5	50.9	41.7	31.8	25.8	21.7	11.3	7.7	5.8
	TORQUE(mN-m)	58.8	98	156.8	186.2	245	294	343	441	490	490	686	686	686	686	686	686	686	686	686
	TORQUE(kg-cm)	0.6	1	1.6	1.9	2.5	3	3.5	4.5	5	5	7	7	7	7	7	7	7	7	7
TG-55C-AM (24V)	SPEED(r/min)	1541	770	518	428	308	259	215	155	130	104	77	65	53.1	40.4	32.7	27.5	16.8	11.3	8.5
	TORQUE(mN-m)	39.2	78.4	98	127.4	176.4	196	245	294	343	441	637	686	686	686	686	686	686	686	686
	TORQUE(kg-cm)	0.4	0.8	1	1.3	1.8	2	2.5	3	3.5	4.5	6.5	7	7	7	7	7	7	7	7

# AP

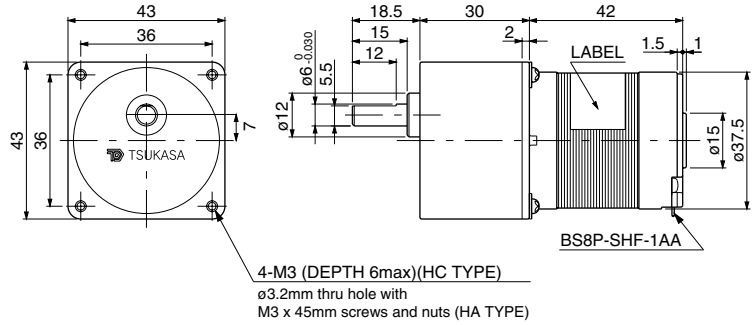
TG-55A  
TG-55B  
TG-55C



(HA TYPE)



(HC TYPE)



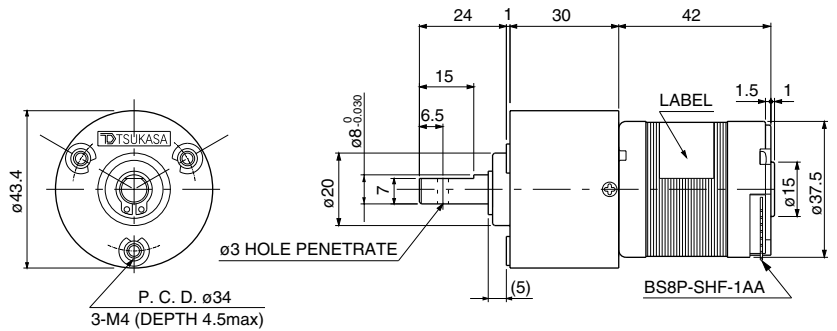
### Allowable torque-speed characteristics

MODEL	GEAR RATIO	1	1	1	1	1	1	1	1	1	1	1	1	1	
		6	8	13	16	20	27	32	43	53	67	81	89	108	133
TG-55A-AP (12V)	SPEED(r/min)	271	191	119	98	78.4	57.5	49.8	36.7	30.4	23.5	19.2	17.5	14.2	11.5
	TORQUE(mN-m)	39.2	58.8	88.2	107.8	137.2	186.2	196	245	294	392	490	539	686	833
	TORQUE(kg-cm)	0.4	0.6	0.9	1.1	1.4	1.9	2	2.5	3	4	5	5.5	7	8.5
TG-55B-AP (12V)	SPEED(r/min)	399	285	182	150	124	93.7	73.1	55.7	45.4	35.4	29.8	26.8	22.4	19.5
	TORQUE(mN-m)	68.6	98	137.2	166.6	196	245	343	392	490	637	735	833	980	980
	TORQUE(kg-cm)	0.7	1	1.4	1.7	2	2.5	3.5	4	5	6.5	7.5	8.5	10	10
TG-55C-AP (12V)	SPEED(r/min)	611	437	274	226	182	133	113	83.6	69.1	53.9	44.2	40.2	32.8	26.6
	TORQUE(mN-m)	39.2	58.8	88.2	107.8	137.2	186.2	196	245	294	392	490	539	686	833
	TORQUE(kg-cm)	0.4	0.6	0.9	1.1	1.4	1.9	2	2.5	3	4	5	5.5	7	8.5
TG-55A-AP (24V)	SPEED(r/min)	505	392	231	196	158	115	92.6	68.7	57.3	44.6	37.2	35	30.5	25.8
	TORQUE(mN-m)	88.2	98	176.4	196	245	343	441	539	637	833	980	980	980	980
	TORQUE(kg-cm)	0.9	1	1.8	2	2.5	3.5	4.5	5.5	6.5	8.5	10	10	10	10
TG-55B-AP (24V)	SPEED(r/min)	939	677	431	356	291	216	173	131	107	84	70	63.2	52.5	44.2
	TORQUE(mN-m)	68.6	98	137.2	166.6	196	245	343	392	490	637	735	833	980	980
	TORQUE(kg-cm)	0.7	1	1.4	1.7	2	2.5	3.5	4	5	6.5	7.5	8.5	10	10
TG-55C-AP (24V)	SPEED(r/min)	1310	944	595	491	395	289	242	180	149	117	95.9	87.1	71.5	57.9
	TORQUE(mN-m)	39.2	58.8	88.2	107.8	137.2	186.2	196	245	294	392	490	539	686	833
	TORQUE(kg-cm)	0.4	0.6	0.9	1.1	1.4	1.9	2	2.5	3	4	5	5.5	7	8.5

GEAR RATIO	STAGE	TORQUE (kg-cm)	WEIGHT (g)
1/6~1/8	2	1	205
1/13~1/16	3	2	220
1/20	3	2.5	220
1/27	3	3.5	220
1/32	3	4.5	220
1/43	4	5.5	235
1/53	4	6.5	235
1/67	4	8.5	235
1/81~1/133	4	10	235

# KU

TG-55A  
TG-55B  
TG-55C



### Allowable torque-speed characteristics

MODEL	GEAR RATIO	1	1	1	1	1
		24	75	96	144	216
TG-55A-KU (12V)	SPEED(r/min)	63.9	20.3	15.8	10.7	7.9
	TORQUE(mN-m)	176.4	490	637	931	980
	TORQUE(kg-cm)	1.8	5	6.5	9.5	10
TG-55B-KU (12V)	SPEED(r/min)	102	31.5	24.8	18.6	13.5
	TORQUE(mN-m)	245	735	931	980	980
	TORQUE(kg-cm)	2.5	7.5	9.5	10	10
TG-55C-KU (12V)	SPEED(r/min)	148	47	36.8	24.7	17.5
	TORQUE(mN-m)	176.4	490	637	931	980
	TORQUE(kg-cm)	1.8	5	6.5	9.5	10
TG-55A-KU (24V)	SPEED(r/min)	125	39.4	33.5	24.4	17.2
	TORQUE(mN-m)	343	980	980	980	980
	TORQUE(kg-cm)	3.5	10	10	10	10
TG-55B-KU (24V)	SPEED(r/min)	238	74.5	58.6	41.6	29.1
	TORQUE(mN-m)	245	735	931	980	980
	TORQUE(kg-cm)	2.5	7.5	9.5	10	10
TG-55C-KU (24V)	SPEED(r/min)	322	102	80.2	53.6	37
	TORQUE(mN-m)	176.4	490	637	931	980
	TORQUE(kg-cm)	1.8	5	6.5	9.5	10

GEAR RATIO	STAGE	TORQUE (kg-cm)	WEIGHT (g)
1/24	2	10	135
1/75	3	10	135
1/96	3	10	135
1/144	3	10	135
1/216	3	10	135